



COMMONWEALTH *of* VIRGINIA
Office of the
SECRETARY *of* TRANSPORTATION

How to use *InteractVTrans*?



HOW TO USE *INTERACT*VTRANS?

*Interact***VTRANS**

VIRGINIA'S
TRANSPORTATION PLAN

 *at your fingertips*

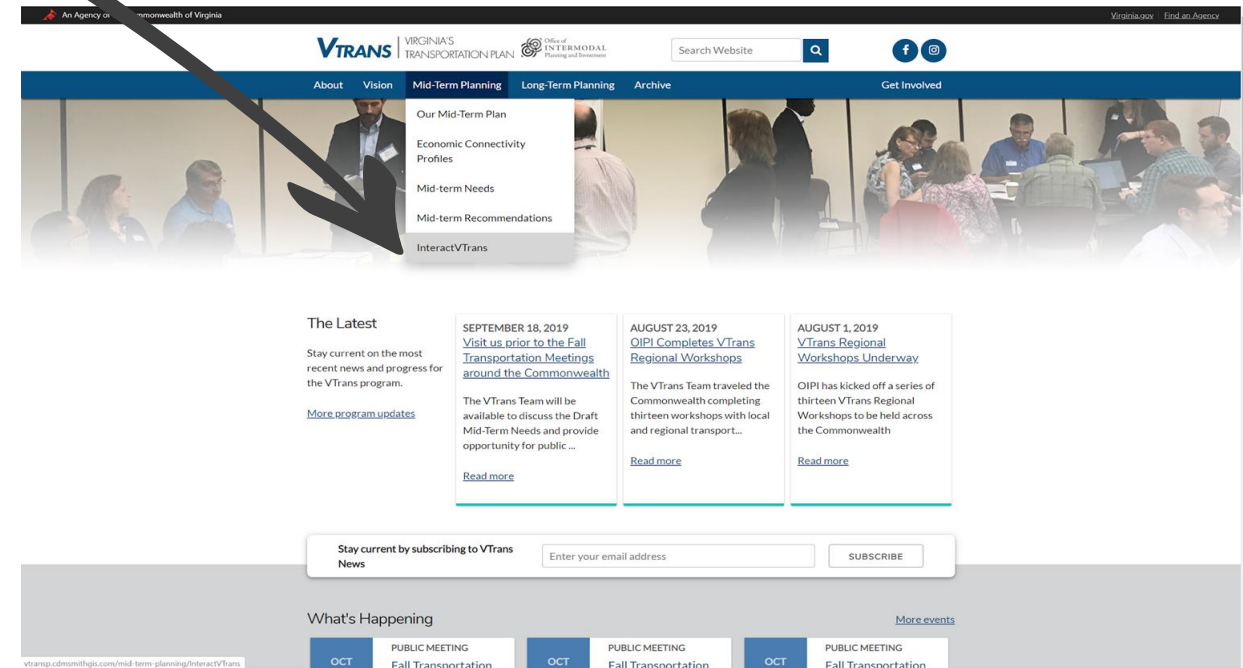
<http://www.vtrans.org/mid-term-planning/InteractVTrans>

HOW TO USE *INTERACT*VTRANS?

[InteractVTrans](#)

To access, go to www.vtrans.org

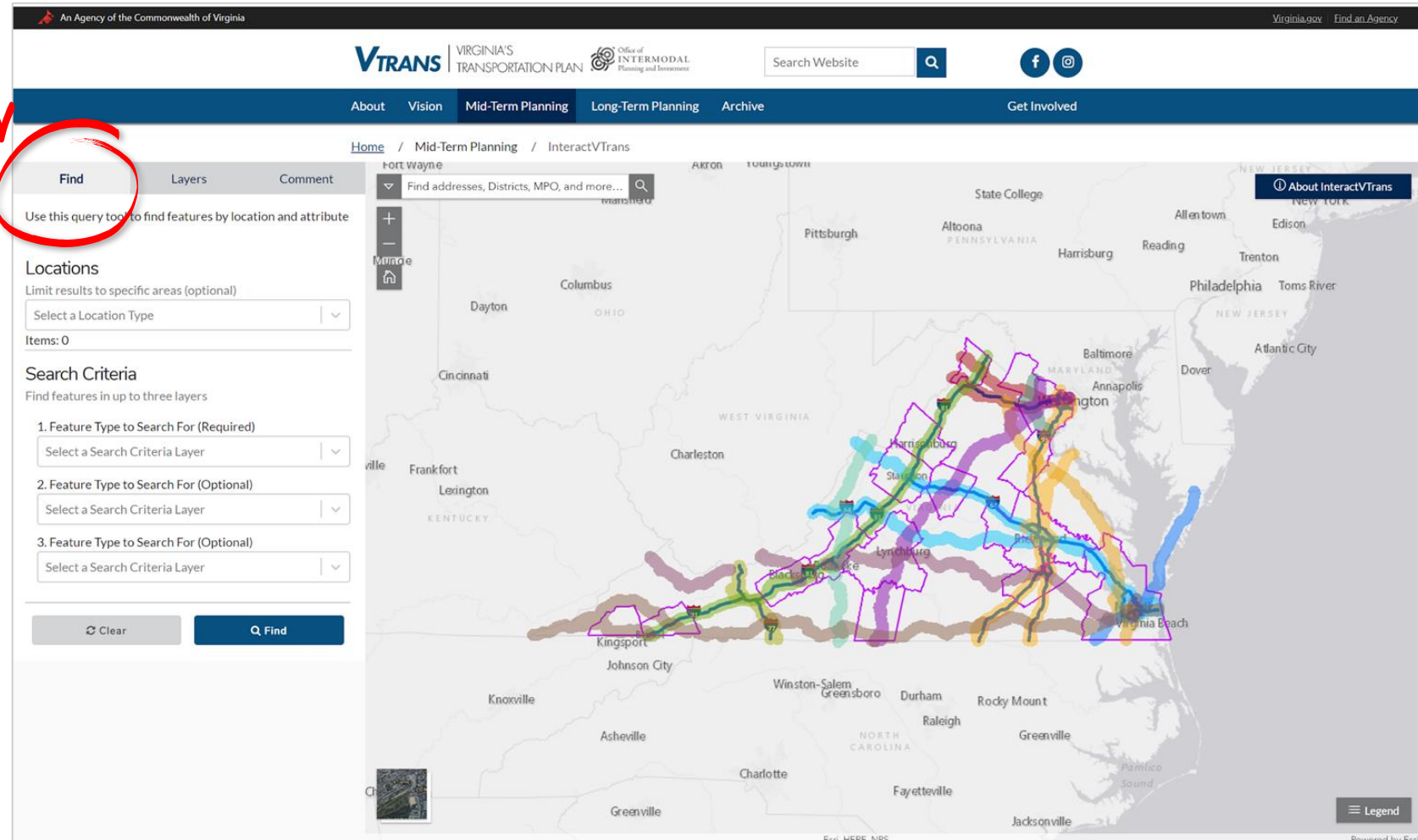
Click Mid-term Planning Tab, and scroll to *InteractVTrans* in dropdown menu



HOW TO USE *INTERACT*VTRANS?

1. **“FIND”** - ability to: query, filter, and download VTrans data specific to a city, county, MPO or PDC area and other areas of geographic interest

[InteractVTrans](#) serves three key functions



HOW TO USE *INTERACT*VTRANS?

1. **“FIND”** - EXAMPLE: In **Salem Construction District**, [InteractVTrans](#) serves three key functions

Need for **Congestion Mitigation**

AND

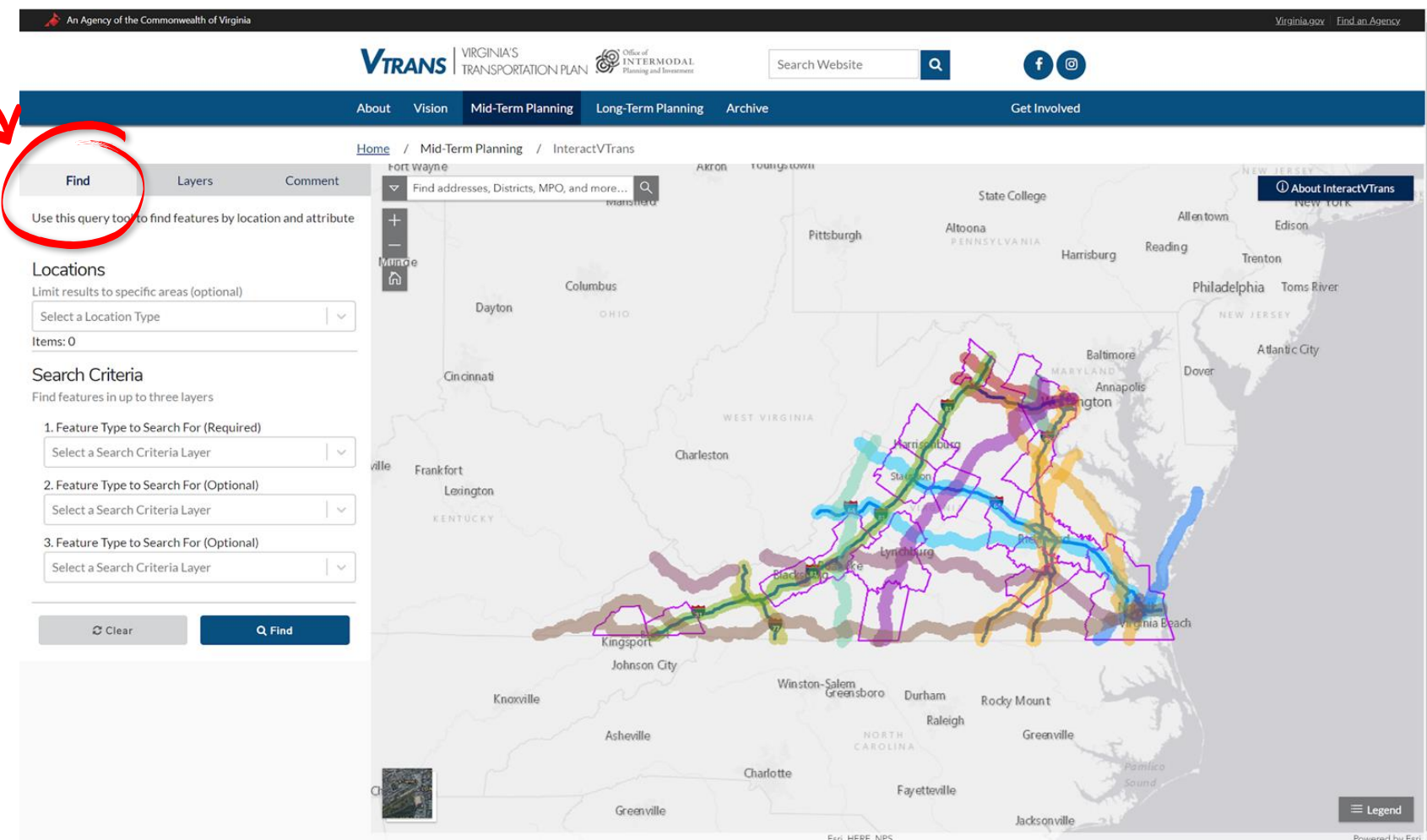
Need for **Travel Time Reliability Improvement**,

AND

Need for **Safety Improvement**

AND

Need for **Corridor Preservation**



HOW TO USE *INTERACT*VTRANS?

1. **“FIND”** - download Mid-term Needs as a table or as a shapefile

Once the Board adopts Mid-term Needs, please ensure that state agency staff and localities are using the **adopted** Mid-term Needs for development of SMART SCALE applications

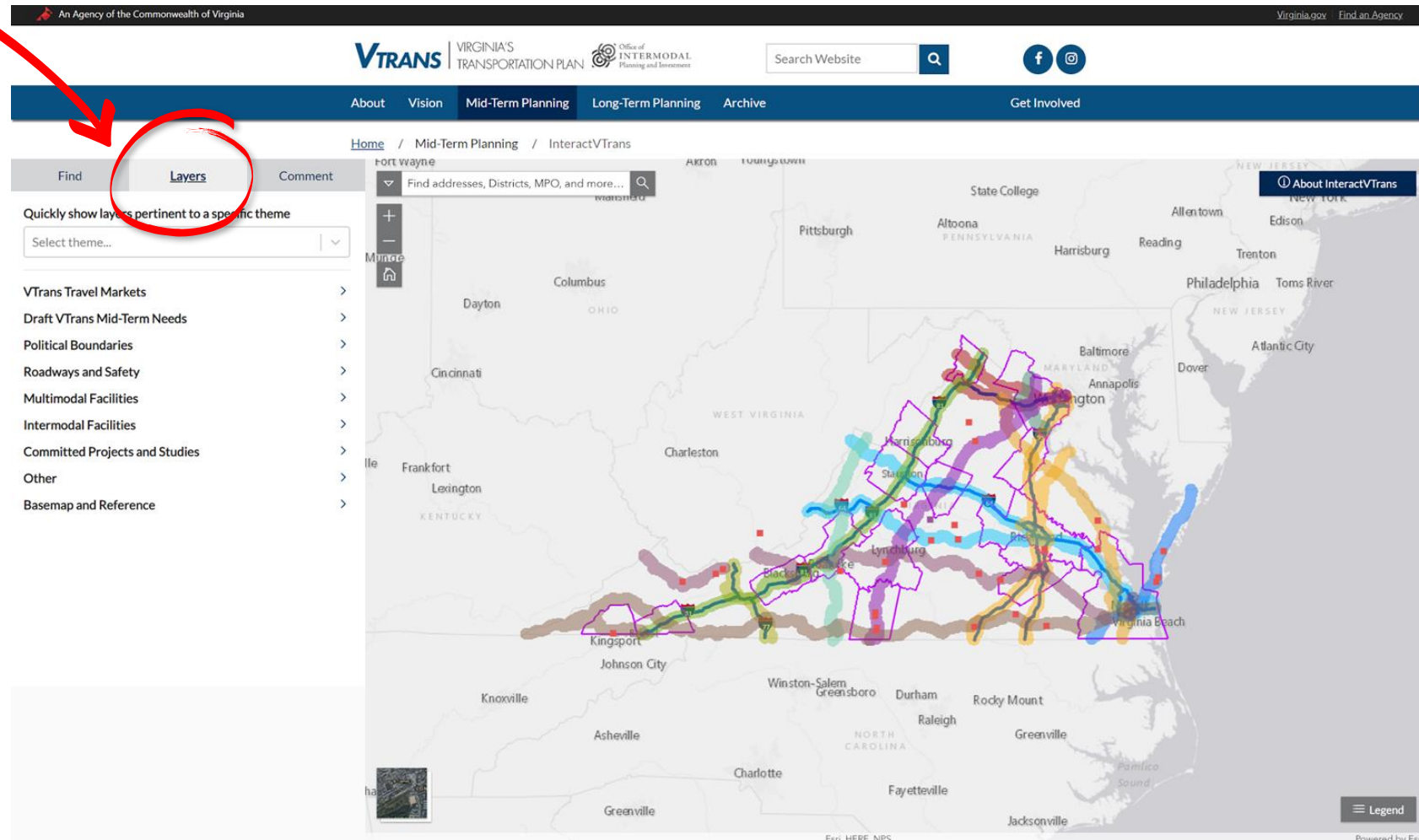
[InteractVTrans](#) serves three key functions

The screenshot displays the InteractVTrans web application. The top navigation bar includes 'About', 'Vision', 'Mid-Term Planning', 'Long-Term Planning', and 'Archive'. The main content area features a map of Virginia with various colored overlays representing transportation needs. On the left, there is a 'Find' panel with a search bar and a 'Download Results' dropdown menu. The dropdown menu is open, showing two options: 'As Tables (CSV)' and 'As Shapefiles (SHP)'. A red arrow points from the text on the left to the 'Download Results' dropdown. The map on the right shows a network of roads and areas with different colors (blue, green, purple, red) indicating different levels of need or speed limits. The bottom right corner of the map area says 'Powered by Esri'.

HOW TO USE *INTERACT*VTRANS?

2. **“LAYERS”** - turn on and off data layers of interest

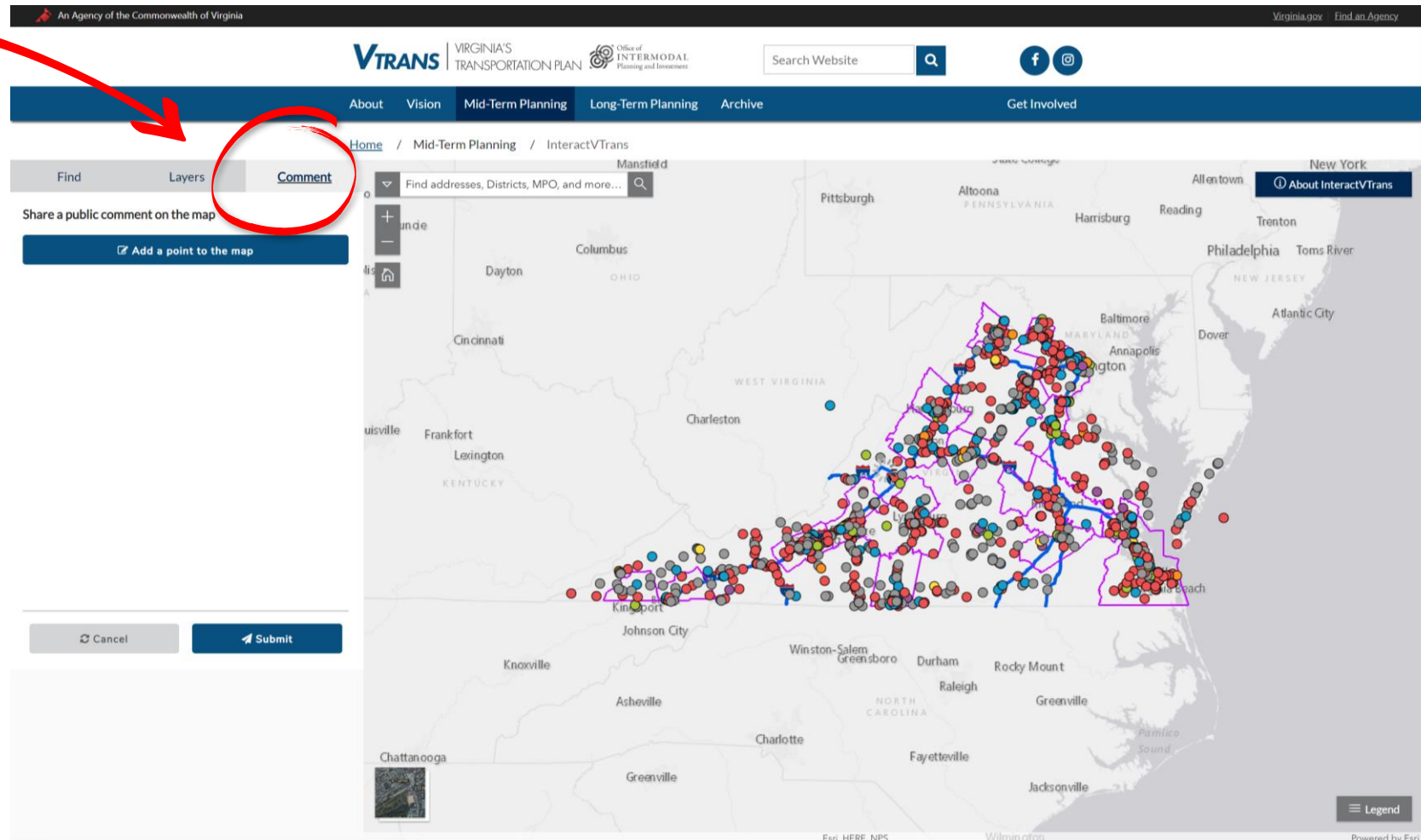
[InteractVTrans](#) serves three key functions



HOW TO USE *INTERACTVTRANS*?

- 3. **“COMMENT”** - by dropping a point on the map and noting a specific comment or idea

[InteractVTrans](#) serves three key functions



HOW TO USE *INTERACT*VTRANS? | NEXT STEPS

- Please explore datasets for accuracy and completeness
- If you see something unexpected, please let VTrans Team know:
 - comment@vtrans.org
- We expect to make some changes and refinements before Commonwealth Transportation Board action is requested in December 2019

HOW TO USE *INTERACT*VTRANS? | QUESTIONS

OIPI Staff Contact Information:

Name	Phone	Email
Jitender Ramchandani	804.786.0868	Jitender.Ramchandani@oipi.Virginia.gov
Katie Schwing	804.786.2362	Kathryn.Schwing@oipi.Virginia.gov
Chris Wichman	804.786.2366	Chris.Wichman@oipi.Virginia.gov



Sign up for updates on the website (www.VTrans.org)



Like our Facebook Page (www.facebook.com/VTransVirginia)



Follow our Instagram Page (www.instagram.com/VTransVirginia)



VTRANS | VIRGINIA'S
TRANSPORTATION PLAN